

SAFE OPERATING PROCEDURE No 25

Timber Infills

WARNING! DO NOT Operate unless Trained and Authorised to do so

PPE usually required on a construction site while handling timber infills.

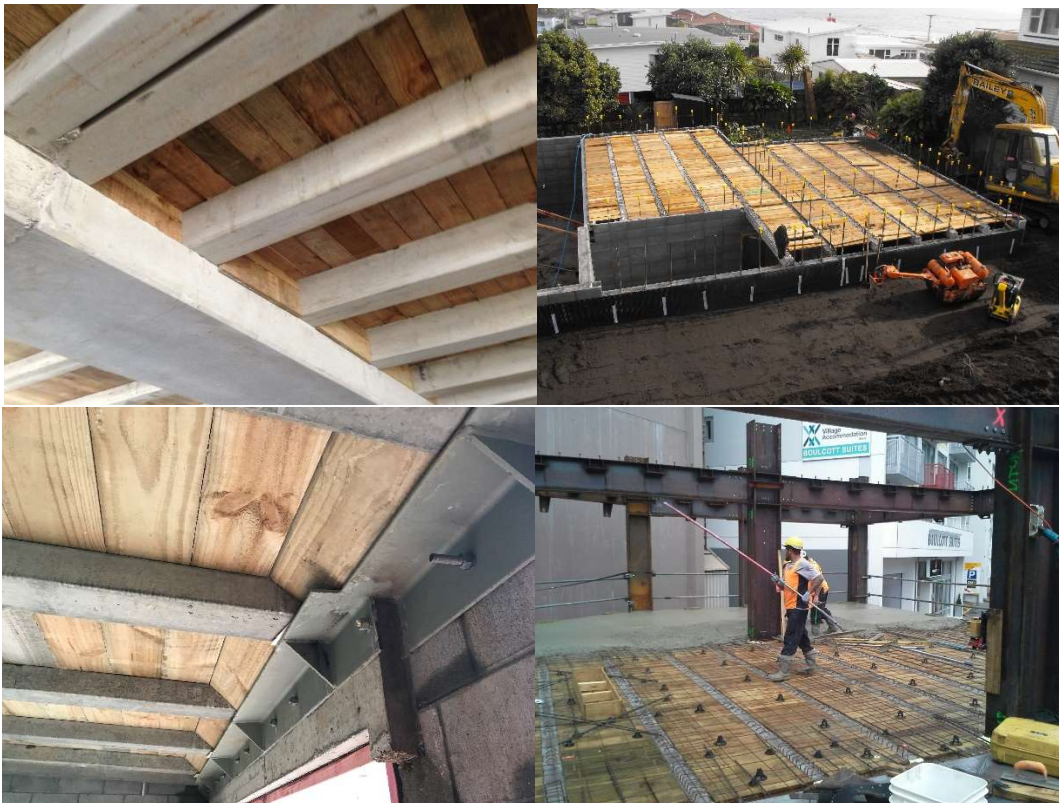


Additional PPE required while cutting treated timber in-fills



HAZARDS

- Timber is a natural product with seen & unseen defects, eg: knots & splits that may result in breakage.
- Infill boards kicked or knocked off the product
- Weather conditions causing infills to move.
- H3 chemical treatment present.
- Rough sawn timber can be prone to causing splinters when handled.
- Inhaling treated timber sawdust during cutting process.
- Muscle or back strain from manual handling.
- Working at height.



This SOP does not necessarily cover all possible hazards associated with this operation and is designed to be used as a reference in conjunction with training and as a reminder to users prior to operation.

PRE-OPERATIONAL SAFETY CHECKS

- Specify 200 x 25mm thick pinus radiata timber infills. No visible defects great than ¼ of board width.
- Include note and timber infill diagram on shop drawings and provide this notice to our customer at time of tender and with shop drawing approval issue.

TIMBER INFILLS

Each piece of timber infill must be inspected by the person installing the timber infills. If there are knots or cracks or other weaknesses across more than 1/4 of the width of any board, then that board must not be used as a timber infill.



Reinforcing mesh should be placed over the infills prior to other work on the floor.

- Ensure the staff installing the infills have read and understand this safe operating practice.
- Limit maximum clear span to 750mm for 25mm thick boards. Spans greater than 750mm place a prop under or use 40mm thick boards to a maximum clear span of 1200mm.
- Have props ready to install for longer timber infill spans noted above.
- Have mesh or reinforcement ready to be placed immediately after timber infills have been placed.

DURING OPERATION

- Timber infills should fit tightly into trowelled rebate on the edge of the prestressed concrete product.
- **Contractor to inspect each board** as they place them discarding boards that do not meet this documents defect specification.
- Refrain from standing on the timber infill in place, especially all of your weight on a single board. Step only on the concrete product.
- Lay mesh immediately after placing the timber infills.
- Use dust mask around all cutting.
- Spread topping concrete evenly when placing and avoid mounding concrete up.

HOUSEKEEPING

- Do not burn waste due to fumes to air and potential damage to domestic fire boxes from treatment chemicals.
- When finished tidy up the work area; place waste in skips or recycle.

This SOP does not necessarily cover all possible hazards associated with this operation and is designed to be used as a reference in conjunction with training and as a reminder to users prior to operation.